

ceramics by Saeam Kwon

**Studio: Samariterstr.4 10247
Berlin, Germany**

CERAMIC DESIGN / CRAFT PRODUCTION

www.saeam-kwon.com
[@saeam.kwon](https://www.instagram.com/saeam.kwon)

Table of Contents

2025 SELECTED PORTFOLIO

Ceramic Design / Craft Production

Berlin, Germany

1 ABOUT / page 04 About / Work Process

2 WORK / page 06 Selected Work

Tableware Page 06

Drinkware Page 16

Objects Page 28

3 Project / page 34 Bespoke design projects

Modular incense set Page 36

Floating ring tea pot Page 38

Vases variation Page 40

4 PRICE LIST / page 42 For Buisnesses and Retailers

Saeam Kwon

About //

I am a South Korean ceramic artist living and working in Berlin, Germany since 2017. My journey in the world of clay began in 2009, and since then, I've been dedicated to studying and working in this captivating field. My current artistic focus centers on crafting stoneware objects, with wheel throwing as my primary technique.

Concept //

My pieces are characterized by their simplicity and clean lines. I utilize minimal, locally sourced materials and a limited color palette to highlight the inherent beauty of clay. Yet, my work pays homage to the traditional shapes and techniques that have stood the test of time, and I aim to find harmony between tradition and innovation, bridging the ancient with the contemporary.



Explore the balance between tradition and modernity.

Current Stockist

AELU Tokyo, Japan
RYOKO Berlin, Germany
Portrait of People Seoul, Korea
LATEEF Bergen, The Netherlands
Chenfei Gallery Liaoning, China
Haptik Flensburg, Germany

Customers

Berlin

Oukan, Acid cafe Mitte, Dotori, Shizuku, The Alchemist kitchen, Ryoko Berlin, Yamyam Berlin, Restaurant Choi, Holly gastrobar, Wawa Berlin, Soapsoop Berlin

In the world

Chef Noah Dalcolle, Yushu gallery London, Ukiyo Toyko, Nonfiction Seoul

Tableware

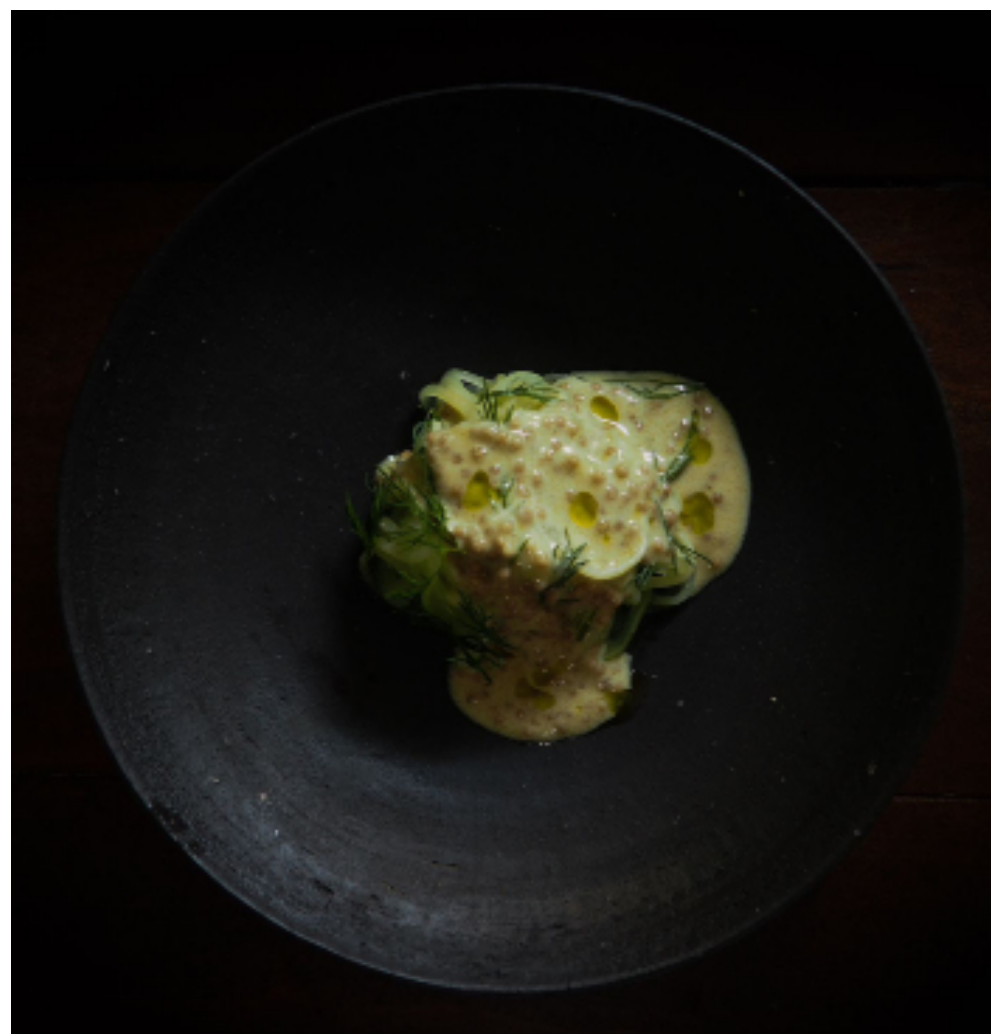
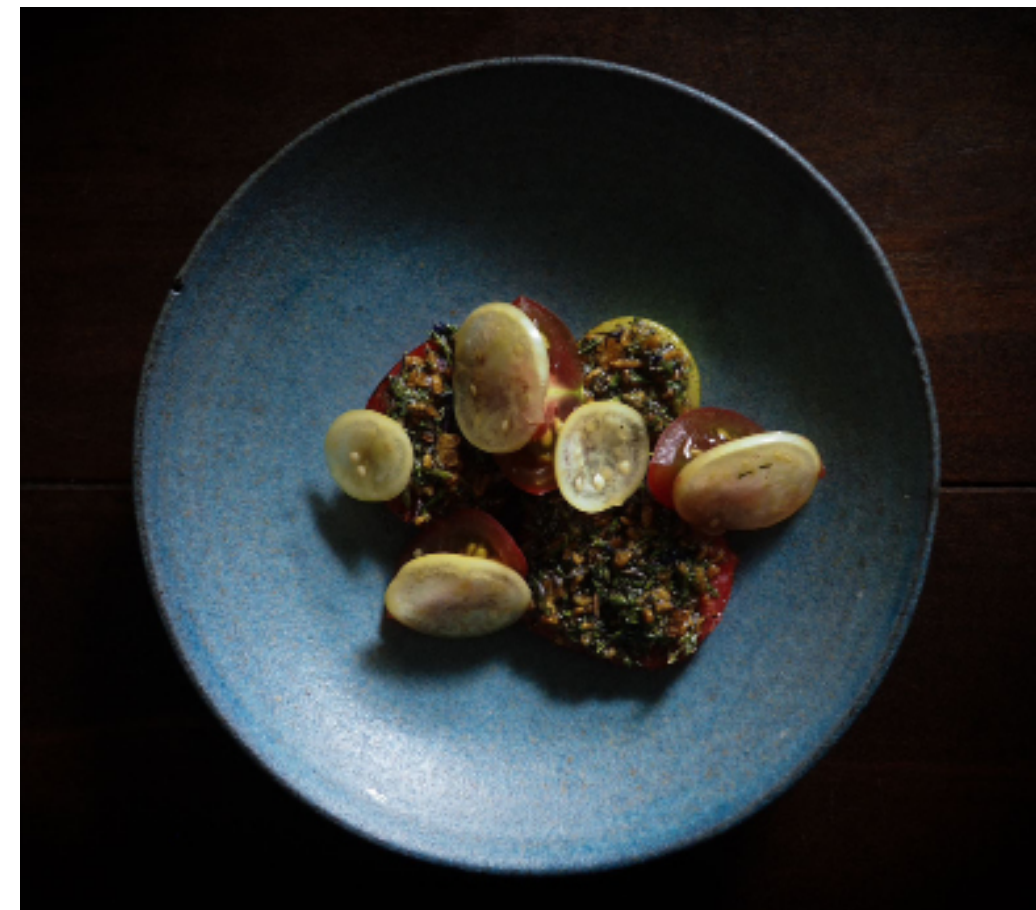
Silent poets of every plate.

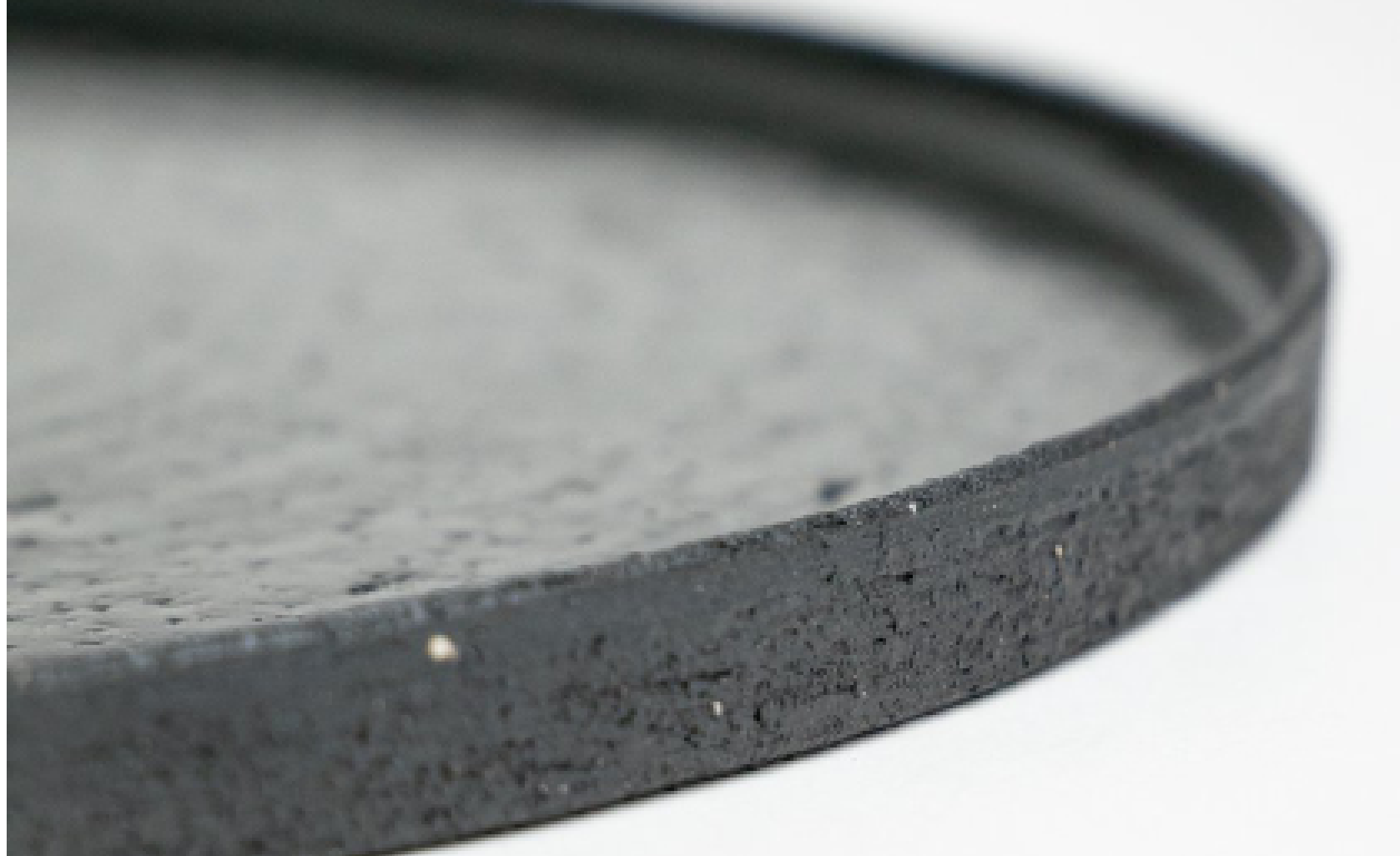
What makes my tableware even more distinct is the material I use – rough stoneware clay with chamotte. This choice gives the plates a textured, rustic feel, allowing you to connect with the authenticity of the clay's raw and unrefined nature. When you touch these plates, you can feel the essence of the earth.

The reason behind this departure from convention is simple: I want the food to take center stage. bright, glossy plates can distract from the culinary artistry. With dark and muted plates made of stoneware clay, the focus remains firmly on the flavors, colors, and presentation of the dishes. These plates serve as a humble yet essential backdrop, enhancing the overall dining experience by letting the food shine in all its glory.

Material	Stoneware clay with 40% of chamotte 0.2mm-0.5mm
	Glaze
Method	Wheel throwing
Temperature	1250°C











Drinkware

Sipper's Delight.

The rough surface, forged from the same earthy clay as my tableware, adds an element of raw authenticity to the act of drinking. It's a reminder that the simple pleasure of enjoying a beverage can be elevated to a sensory experience. These rough-surfaced drinkware might seem unfamiliar to most, especially since it's something that touches the skin of your lips.

But in this quest for the extraordinary, I've discovered that not everything that feels 'comfortable' is necessarily the best. they are designed to awaken your senses and bring a touch of artistic beauty to your everyday rituals.

Material Stoneware clay with 40% of chamotte 0.2mm-0.5mm
Glaze
Method Wheel throwing
Temperature 1250°C













Objects

Sculpted Elegance.

While my primary focus remains on achieving a sense of minimalism with my tableware, I relish the chance to express my artistic vision more fully when creating objects, allowing the clay to become a canvas for my creative vision. Some have clean, straight edges for a modern touch, while others feature gentle curves inspired by nature. Some even have a rustic, raw look, celebrating the beauty of imperfection.

My inspiration is deeply rooted in Korean tradition, drawing from the patterns, motifs, and techniques that have adorned Korean ceramics for generations. but I also get the hints from everything around me — the world's patterns, urban landscapes, and the simple beauty of everyday life. I take these influences and infuse them into each piece I craft.

Material	Mixed stoneware clay (Photo on 17p) Stoneware clay with 40% of chamotte 0.2mm-0.5mm Glaze
Method	Hand building (Photo on 17p) Wheel throwing
Temperature	1250°C







Bespoke design /1

Design & Producing for Ryoko Berlin

About this project W RYOKO

RYOKO is a place for sensory explorations through olfactory creations, curated boutique, manual therapy, scent-scapes installation, tearoom, various workshops and collaborations.

In collaboration with Ryoko, I designed and produced these ultimate burner module sets.

This set offers different options for burning incense:

1. Using the traditional Japanese 'so-radaki' method with charcoal and ash.
2. Warming a tiny piece of incense and woods on the ceramic plate over the heat to diffuse the scent.

The set includes:

Large tray / Black / Diameter 25cm
 'House' Burner / Black / Diameter 8cm x H 7.5cm
 Plates / Black / Diameter 9-10cm
 Small Incense Cases / Steel blue / Diameter 4.5cm
 Lidded Incense Burner / 2 sizes and colors/ Black and Steel Blue





Bespoke design /2

Design & Producing for Yamyam Berlin

About this Project w YamYam

Yamyam is a Korean restaurant in Berlin-Mitte for over a decade. their philosophy is beautifully simple: "we exist to delight our guests."

In collaboration with YamYam I designed and produced these floating ring teapots and matching cups.

This cylindrical, handle-less teapot is designed to keep the look as minimalist as possible, while still allowing you to hold the hot vessel in your hand and pour the tea. The separation between the ring handle and the teapot's body effectively prevents immediate heat transfer, ensuring a comfortable and safe tea-serving experience. It required precise dimensional manufacturing techniques to ensure that it was integrated with the indurstiral tea sieve.



Bespoke design /3

Producing for Nonfiction
curation by Clarisse Demory

About Nonfiction

Nonfiction is a lifestyle beauty brand created for and inspired by your most honest self. Based on the finest raw materials and delicate perfumery, we present a fragrance line that creates a mysterious and unique mood, and a body care product line that completes the beginning to end of the day cycles.

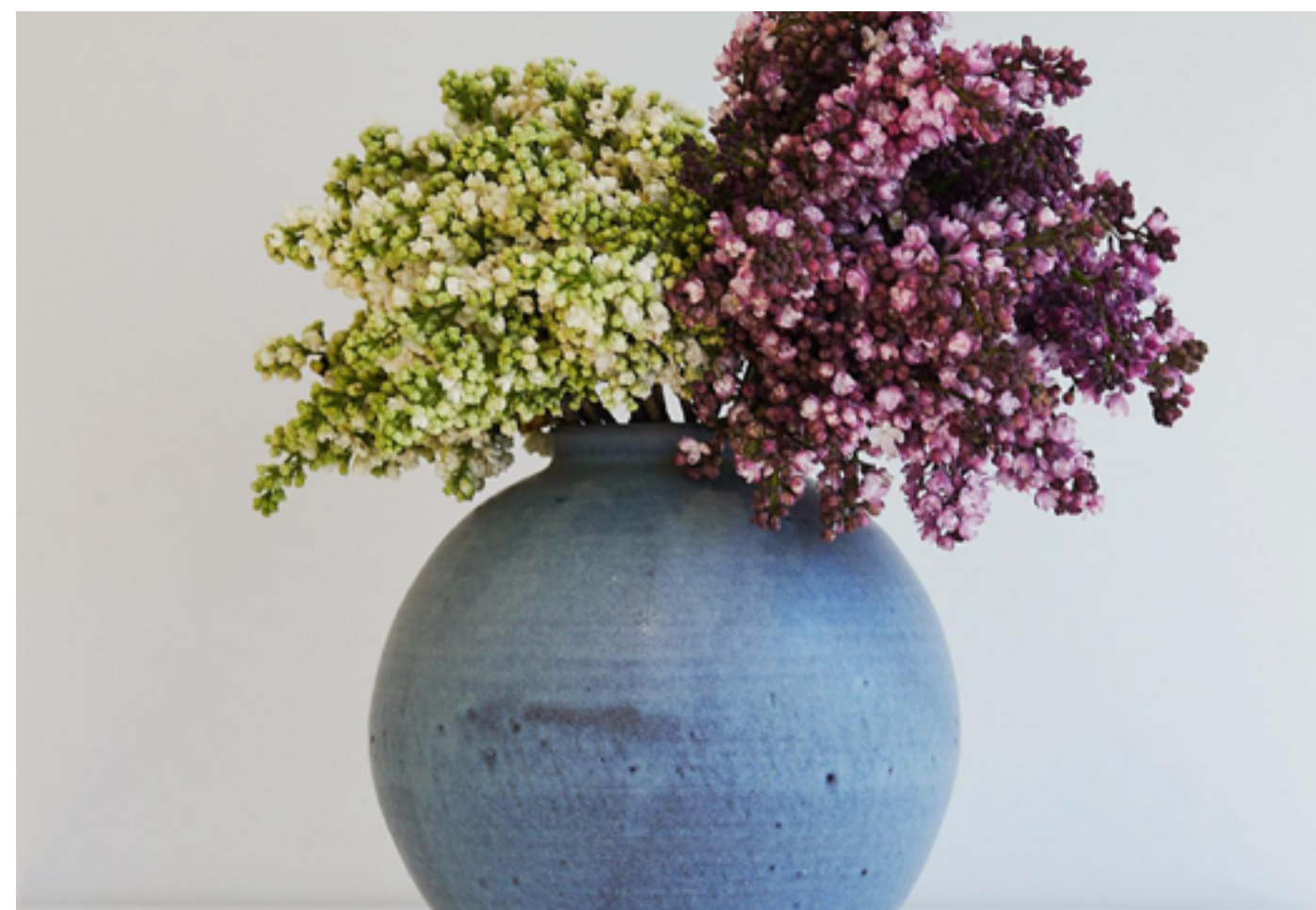
Curation

Nonfiction and Creative Director Clarisse Demory bringing together a curation of beautiful object from 10 young Korean craft artists.

In collaboration with Nonfiction, I produced and participated in designing under the direction of Clarisse Demory.

Three white cuboid ceramic boxes and one pale blue moon jar for flower arrangements were presented in a pop-up store in Le Marais, Paris, and later in Seoungsu, Seoul.

Nonfiction's scented narratives have been translated into 'Language of Light,' a curated collection of objet d'art pieces by ten young Korean artists. Additionally, a thoughtfully selected series of art books, centered around themes of rituals and spaces, was featured at the pop-up store.



B2B Price List

for Buisness and Retailer

Plates

- Shallow plate	
ø16cm	29€
ø19cm	36€
- Flat plate	
dessert plate ø18cm	33€
dining plate white ø25cm	41€
dining plate black ø25cm	44€

Bowls

- XS ~ø5cm (3 set of small teacups 40€)	14€
- S ~ø10cm	24€
- M ~ ø15cm	29€
- L ~ø19cm	36€
- XL over ø25cm	45€

Drinkware

- U Cup ø7.5cm H8.5cm	29€
- Shaped cup up to 100ml	29€
- Mug w handle ø7.5cm H8 5.m	35€
- Gaiwan up to 100ml	39€
- Tea pitcher up to 100ml	26€
- Goblet ø6.5cm H9cm	47€
- Coffee Dripper set for 2ppl	88€
- Kyushu 200ml	90€

Objects

-Cylinder vases H18cm	120€
-Round vases H15cm	135€
-Moon jar H18cm	160€

Terms and Condition

- Minimum order quantities : 10 pieces per design
/ 5 pieces per design for “Objects”

- Wholesale Discount: 50% off retail price.

- You're free to set your own retail prices according to your market

-Customizations in dimension, color, texture is available based on the designs presented in this portfolio

-Creating exclusive design is available

- Additional discounts for larger orders available

- All products are made to order, please expect lead time

- Offering samples and prototypes for reduced price on request

-The pricing provided is specific to the items featured in this portfolio, Please note that pricing may vary based on the selected material / dimensions

THANK YOU

**Ceramics
by
Saeam
kwon**

Address /

Samariterstr. 4 10247
Berlin, Germany

Contact /

+4915736603244
saeamkwon.ceramics@
gmail.com
www.saeam-kwon.com