

ceramics by Saeam Kwon

**Studio: Samariterstr.4 10247
Berlin, Germany**

CERAMIC DESIGN / CRAFT PRODUCTION

www.saeam-kwon.com
[@saeam.kwon](https://www.instagram.com/saeam.kwon)

Table of Contents

2026 SELECTED PORTFOLIO
A curated selection of Teaware

Ceramic Design / Craft Production

Berlin, Germany

1 ABOUT / page 04 About / Work Process

2 WORK / page 06 Selected Work

Plates Page 06

Teaware Page 12

Objects Page 36

3 Project / page 48 Bespoke design projects

Modular incense set Page 42

Floating ring tea pot Page 46

4 PRICE LIST / page 50 For Buisnesses and Retailers

Saeam Kwon

About //

I am a South Korean ceramic artist living and working in Berlin, Germany since 2017. My journey in the world of clay began in 2009, and since then, I've been dedicated to studying and working in this captivating field. My current artistic focus centers on crafting stoneware objects, with wheel throwing as my primary technique.

Concept //

My pieces are characterized by their simplicity and clean lines. I utilize minimal, locally sourced materials and a limited color palette to highlight the inherent beauty of clay. Yet, my work pays homage to the traditional shapes and techniques that have stood the test of time, and I aim to find harmony between tradition and innovation, bridging the ancient with the contemporary.



**Simple, deliberate,
functional. Designed for
the ritual of tea.**

Current Stockist

AELU Tokyo, Japan
RYOKO Berlin, Germany
Portrait of People Seoul, Korea
LATEEF Bergen, The Netherlands
Chenfei Gallery Liaoning, China
Haptik Flensburg, Germany
De Barro Chiemsee Keramik, Germany
Crafters of Today, Spain
Dot Tea Bar, Germany
Te e teiere, Italy

Collaborators

Berlin handcrafts collective, Flowers and moods, Oukan, Acid cafe Mitte, Dotori, Shizuku, The Alchemist kitchen, Urbiks Music, Yushu gallery London, Ukiyo Toyko, Nonfiction Seoul, Chef Noah Dalcolle, Ryoko Berlin, Yamyam Berlin, Restaurant Choi, Holly gastrobar, Wawa Berlin, Soapsoop Berlin

Plates

where food meets tea.

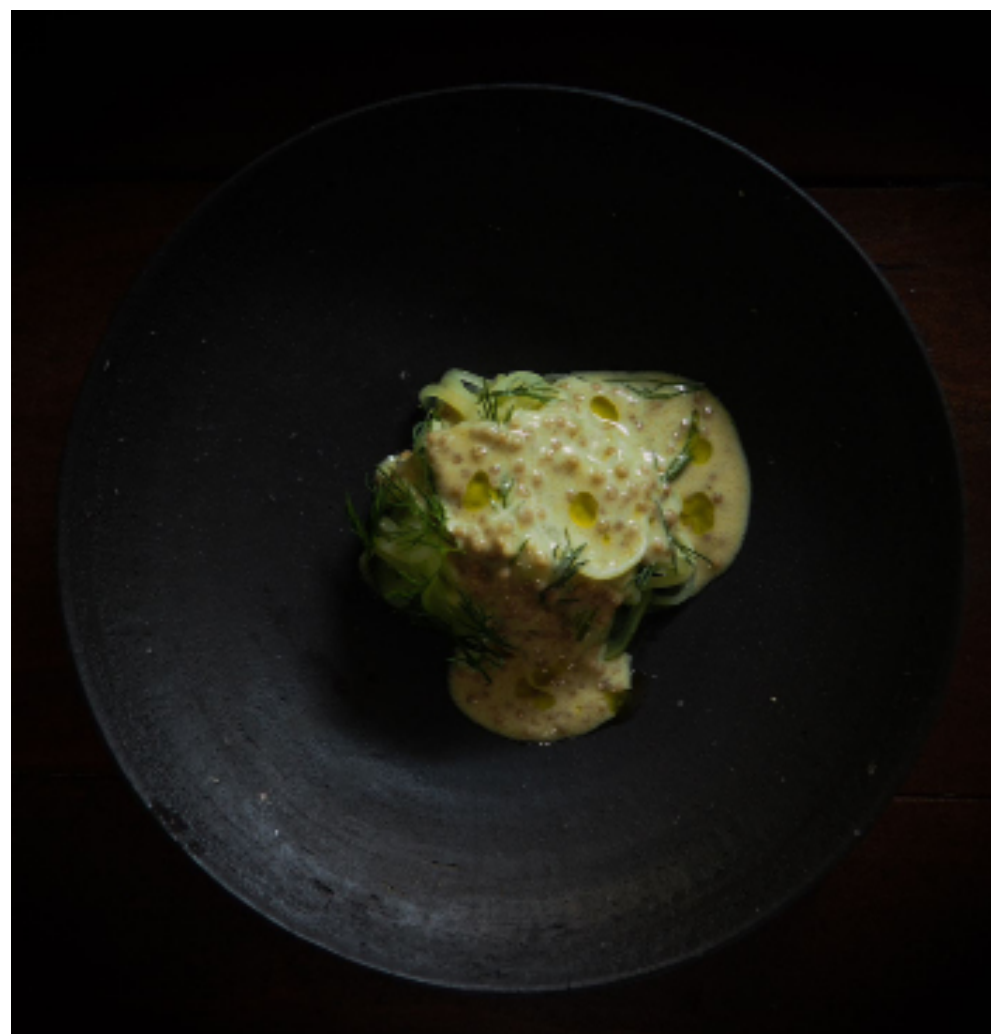
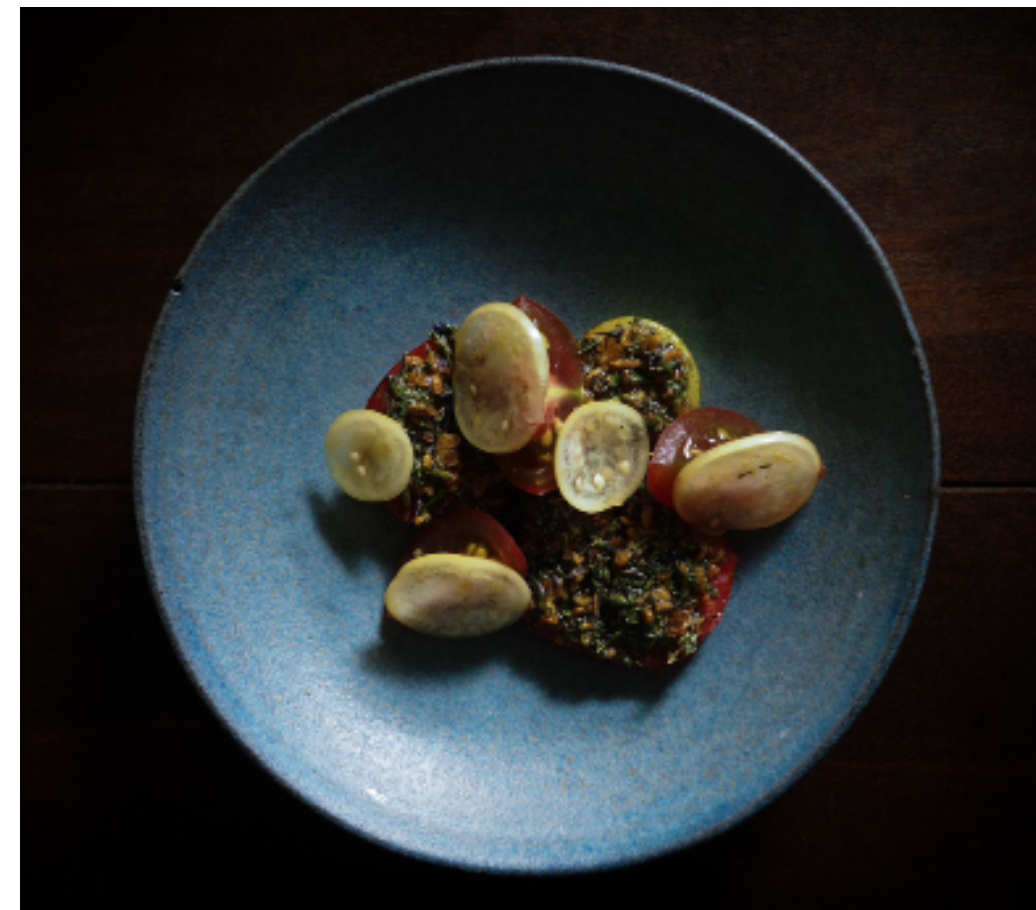
What makes my tableware unique is the material – rough stoneware clay with chamotte. Its texture lets you feel the raw essence of the earth.

I chose this for tea settings. Glossy plates can distract from the ritual. Dark, muted stoneware keeps the focus on the tea – its color, aroma, and the act of pouring and sipping. Each piece serves as a simple, thoughtful companion, letting the ceremony unfold naturally.

These plates are versatile. Use them to hold tea snacks, as a simple tray for a serene tea setting, to display incense, or even as a tea boat. Let your imagination guide the way.

Material	Stoneware clay with 40% of chamotte 0.2mm-0.5mm
	Glaze
Method	Wheel throwing
Temperature	1250°C







Teaware

crafted for quiet moments.

The rough surface, forged from the same earthy clay as my tableware, adds an element of raw authenticity to the act of drinking. It's a reminder that the simple pleasure of enjoying a beverage can be elevated to a sensory experience. These rough-surfaced teaware might seem unfamiliar to most, especially since it's something that touches the skin of your lips.

But in this quest for the extraordinary, I've discovered that not everything that feels 'comfortable' is necessarily the best. they are designed to awaken your senses and bring a touch of artistic beauty to your everyday rituals.

Material Stoneware clay with 40% of chamotte 0.2mm-0.5mm
Glaze
Method Wheel throwing
Temperature 1250°C

























Objects

Sculpted Elegance.

While my primary focus remains on achieving a sense of minimalism with my teaware, I relish the chance to express my artistic vision more fully when creating objects, allowing the clay to become a canvas for my creative vision.

Some have clean, straight edges for a modern touch, while others feature gentle curves inspired by nature. Some even have a rustic, raw look, celebrating the beauty of imperfection.

My inspiration is deeply rooted in Korean tradition, drawing from the patterns, motifs, and techniques that have adorned Korean ceramics for generations. but I also get the hints from everything around me — the world's patterns, urban landscapes, and the simple beauty of everyday life. I take these influences and infuse them into each piece I craft.

Material Mixed stoneware clay (Photo on 17p)
Stoneware clay with 40% of chamotte 0.2mm-0.5mm
Glaze

Method Hand building (Photo on 17p)
Wheel throwing

Temperature 1250°C







Bespoke project /1

Design & Producing for Ryoko Berlin

About this project W RYOKO

RYOKO is a place for sensory explorations through olfactory creations, curated boutique, manual therapy, scent-scapes installation, tearoom, various workshops and collaborations.

In collaboration with Ryoko, I designed and produced these ultimate burner module sets.

This set offers different options for burning incense:

1. Using the traditional Japanese 'so-radaki' method with charcoal and ash.
2. Warming a tiny piece of incense and woods on the ceramic plate over the heat to diffuse the scent.

The set includes:

Large tray / Black / Diameter 25cm
 'House' Burner / Black / Diameter 8cm x H 7.5cm
 Plates / Black / Diameter 9-10cm
 Small Incense Cases / Steel blue / Diameter 4.5cm
 Lidded Incense Burner / 2 sizes and colors/ Black and Steel Blue





Bespoke design /2

Design & Producing for Yamyam Berlin

About this Project w YamYam

Yamyam is a Korean restaurant in Berlin-Mitte for over a decade. their philosophy is beautifully simple: "we exist to delight our guests."

In collaboration with YamYam I designed and produced these floating ring teapots and matching cups.

This cylindrical, handle-less teapot is designed to keep the look as minimalist as possible, while still allowing you to hold the hot vessel in your hand and pour the tea. The separation between the ring handle and the teapot's body effectively prevents immediate heat transfer, ensuring a comfortable and safe tea-serving experience. It required precise dimensional manufacturing techniques to ensure that it was integrated with the indurstiral tea sieve.





B2B Price List

for Business and Retailer

Tea plates

- Shallow plate	
ø16cm	29€
ø19cm	36€
- Flat plate	
ø18cm	33€
white ø25cm	57€
black ø25cm	69€

Tea bowls

- XS ~ø5cm (3 set of small teacups 40€)	14€
- S ~ø10cm	24€
- M ~ ø15cm	29€
- L ~ø19cm	36€
- XL over ø25cm	45€

Teaware

- Teacup with shape <50ml	23€
- Teacup with shape <80ml	26€
- Teacup with shape <100ml	29€
- Gaiwan <50ml	34€
- Gaiwan / Shiboridasi <80ml	37€
- Gaiwan / Shiboridasi <100m	40€
- Tea pitcher (Gongdaobei) < 100ml	26€
- Teapot (Kyushu) <200ml	123€
- Teapot (Kyushu) <500ml	137€

Drinkware

- Mug w handle ø7.5cm H8 5.m 200ml	29€
- U Cup ø7.5cm H8.5cm 200ml	35€

Objects

- Moon Jar, Vases	from 140€
-------------------	-----------

Terms and Conditions (Updated: Jan 2026)

Please note that the wholesale conditions are based on the EU standard, and may differ for international orders.

* **MOQ:** 10 pcs per design and glaze

* **Wholesale Discount:** 50% off retail price

* **Retail Pricing:** Set at your discretion

* **Production:** Made to order / Lead time: min. 6 week (Lead times may be longer due to current demand)
Production begins only after order confirmation with prepayment. full payment or 50% upfront and 50% upon delivery. Cancellations or refunds are not accepted once production has started.

* **Shipping:** Shipping costs, import duties and taxes are the buyer's responsibility. The buyer assumes full responsibility during shipping.

* **Customization:** Dimensions, glaze, and texture available based on portfolio designs. exclusive designs are vailable for larger orders

* **Volume Discounts:** Available upon request

* **Samples / Prototypes:** Reduced pricing available upon request

* **Pricing:** Subject to change based on material and dimensions

THANK YOU

**Ceramics
by
Saeam
kwon**

Address /

Samariterstr. 4 10247
Berlin, Germany

Contact /

+4915736603244
saeamkwon.ceramics@
gmail.com
www.saeam-kwon.com